

Final Project Proposal

11_18

Materials:

SHAPE MEMORY ALLOYS/POLYMERS

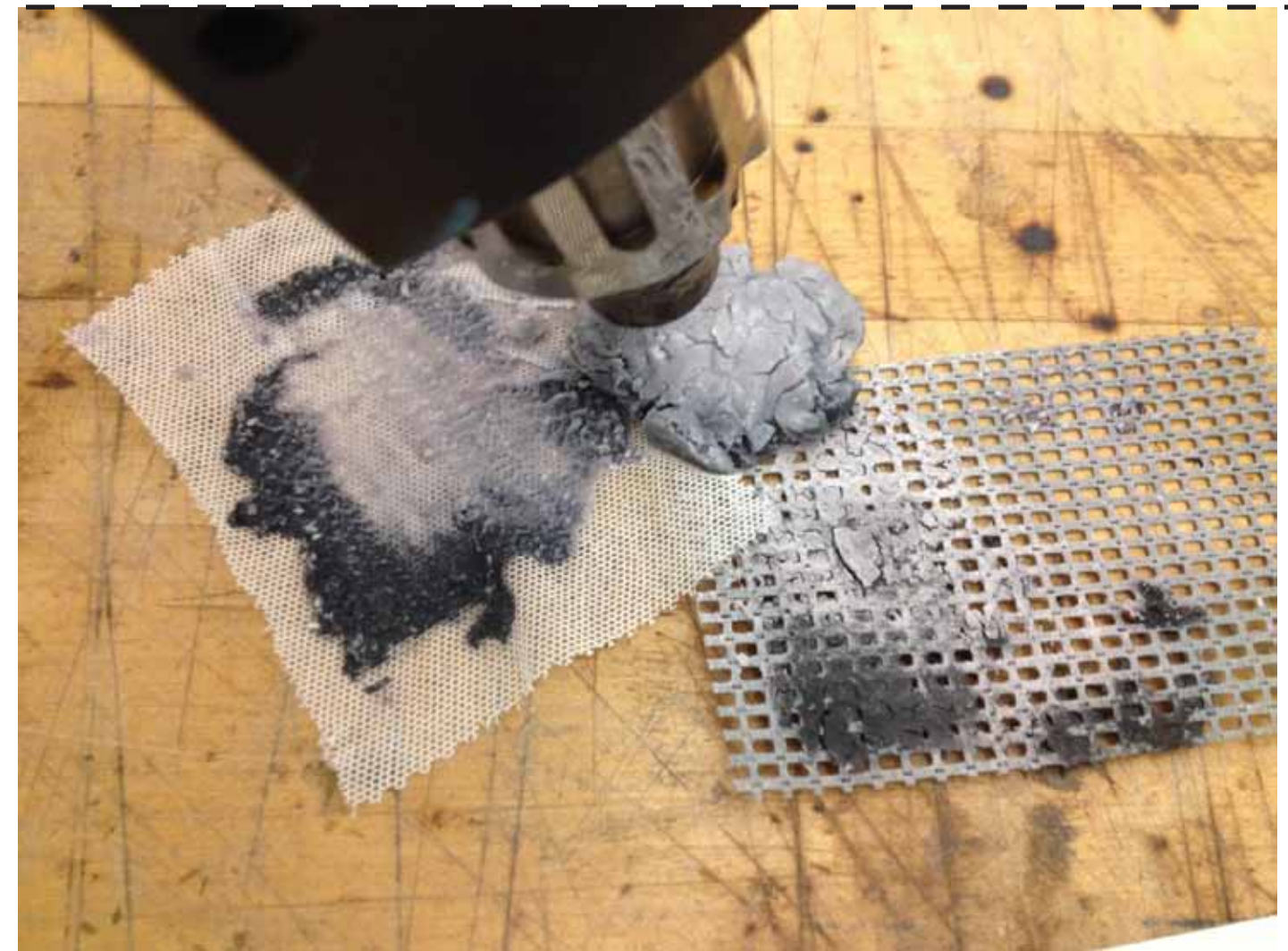
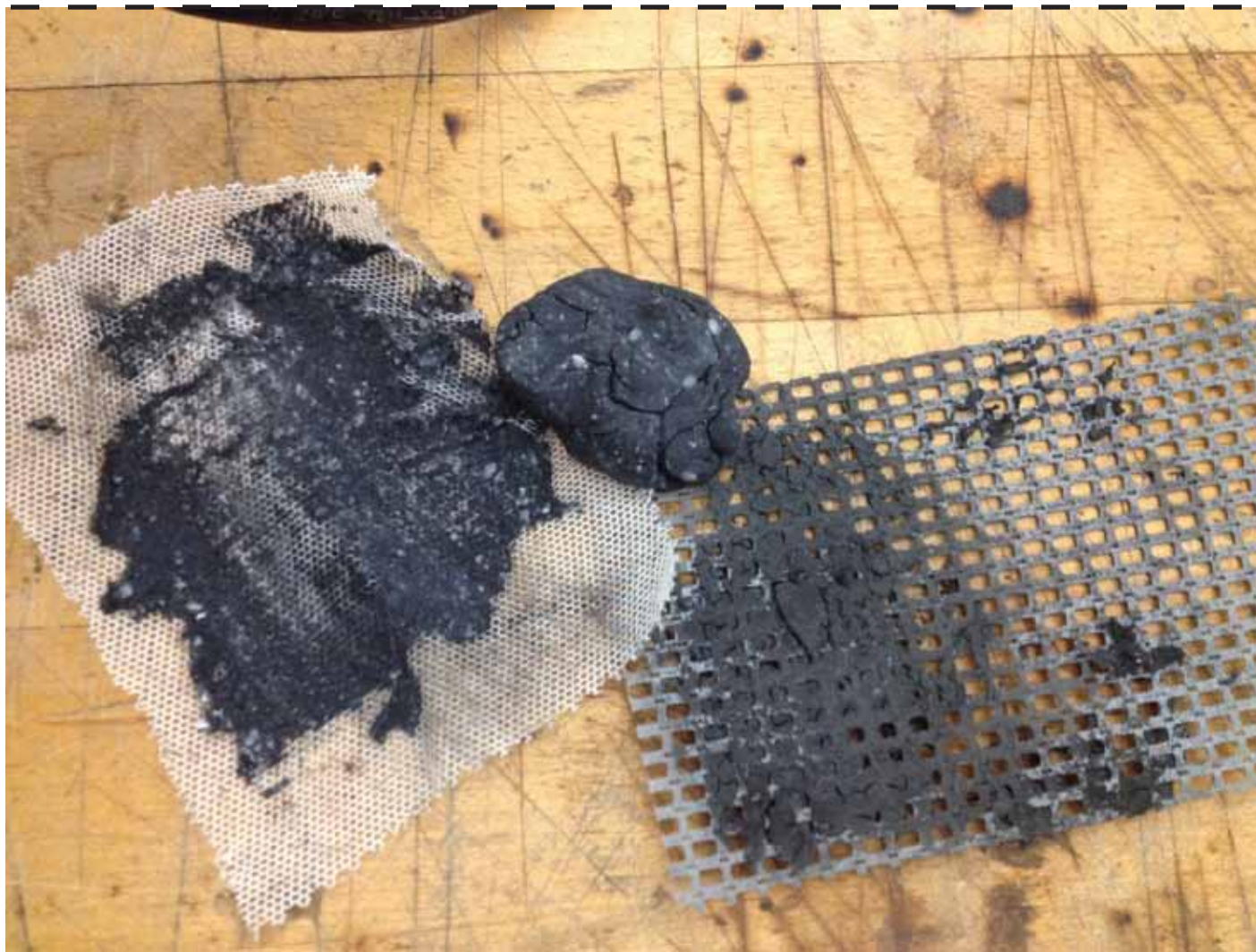
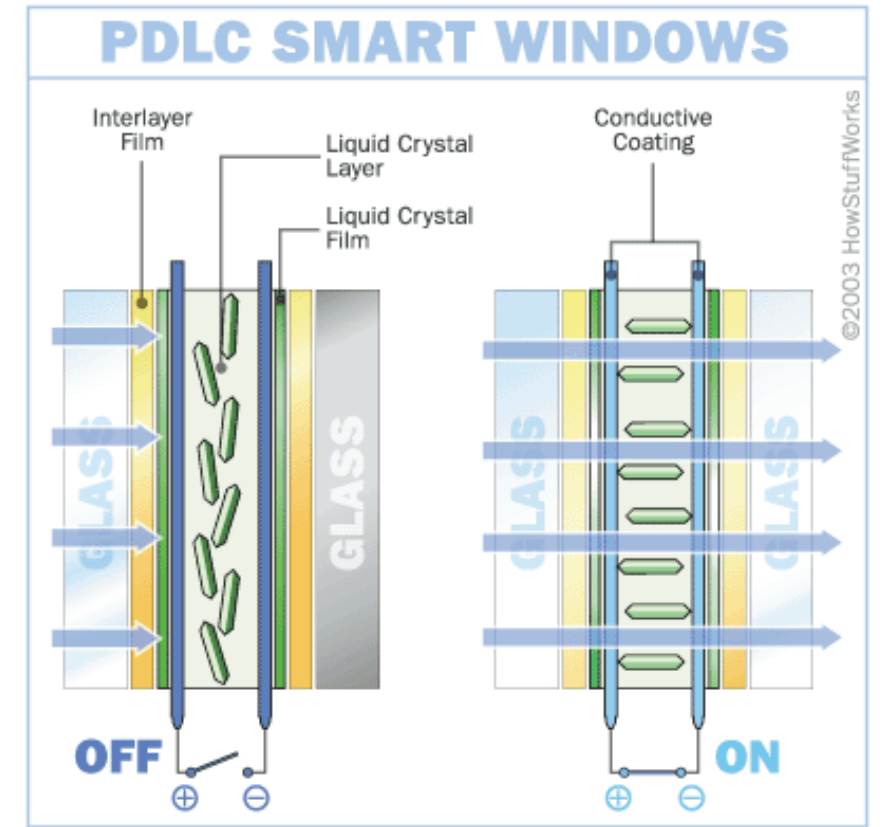
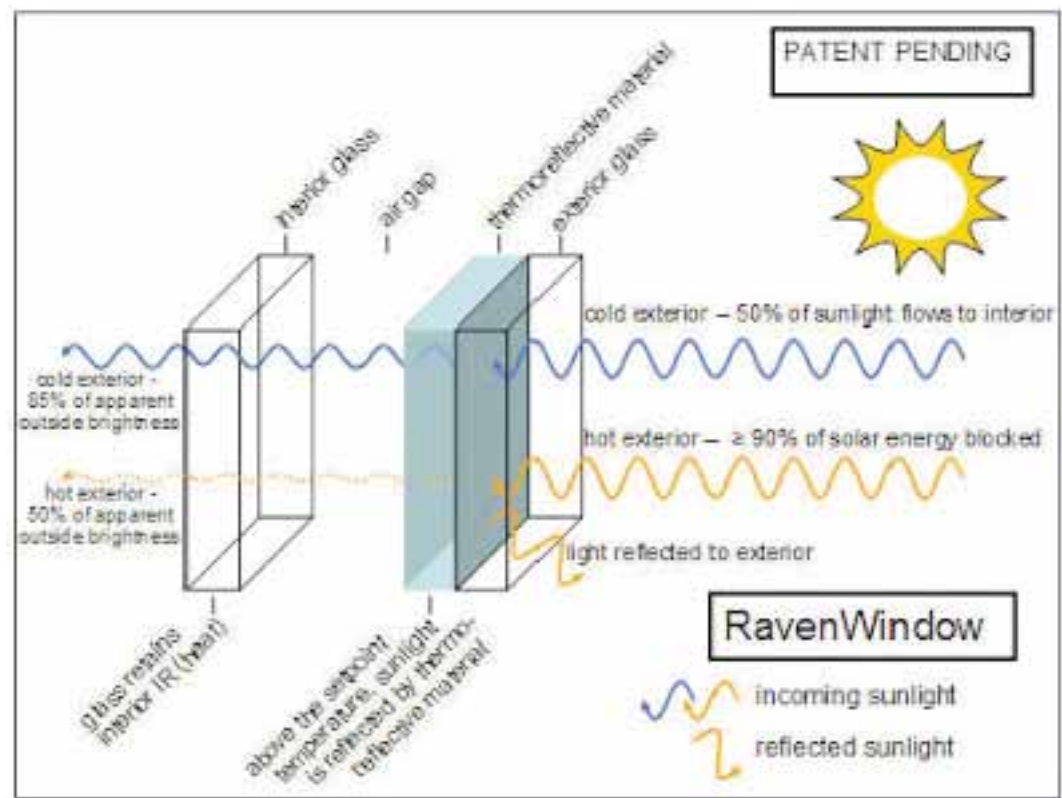
THERMOCHROMIC INK

Goals:

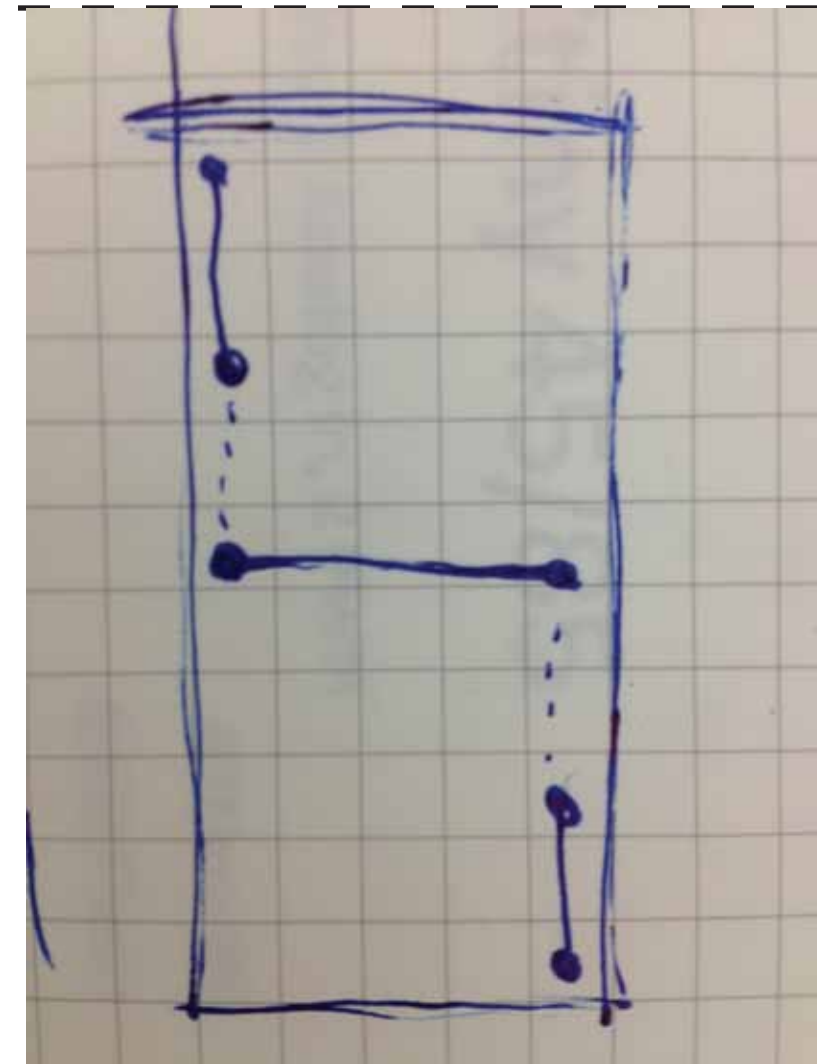
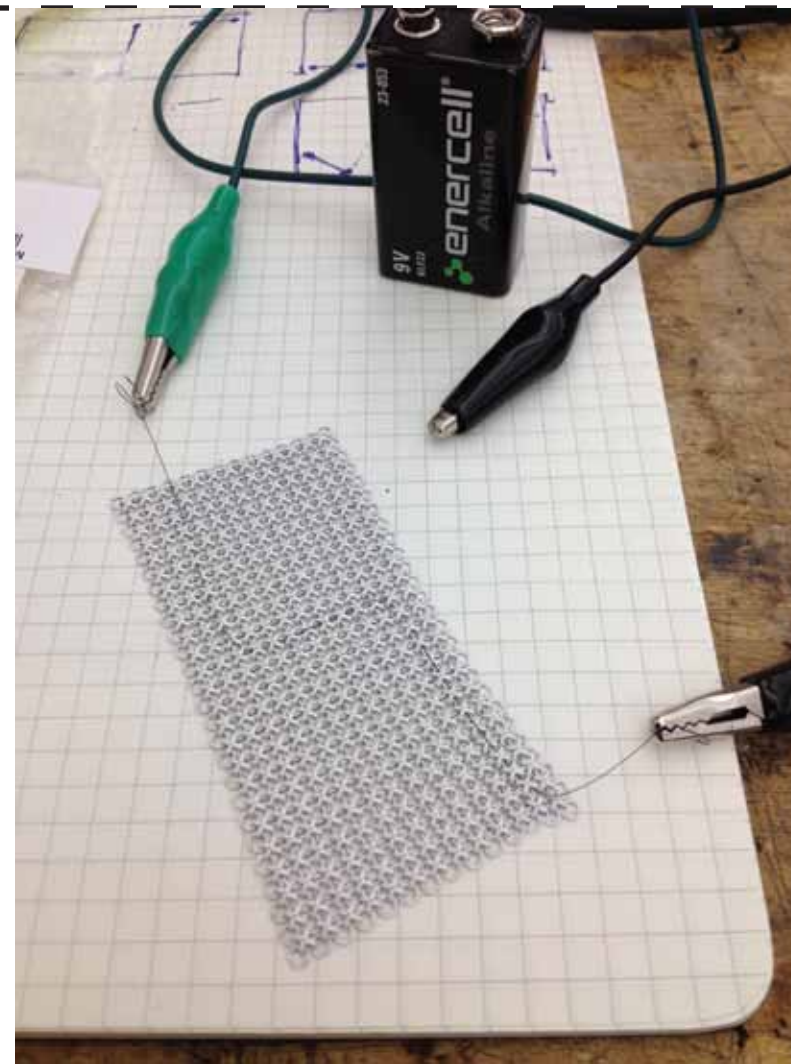
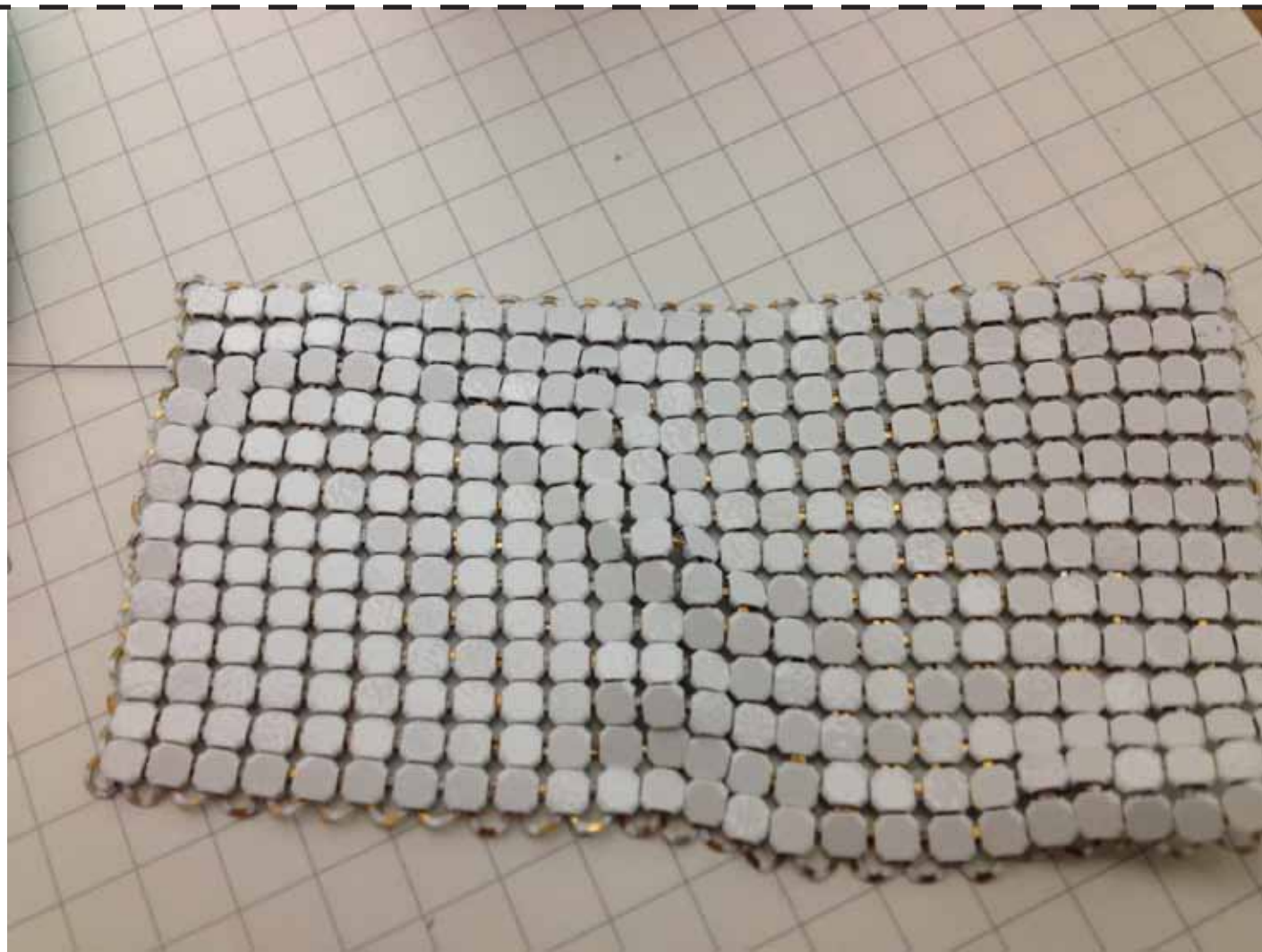
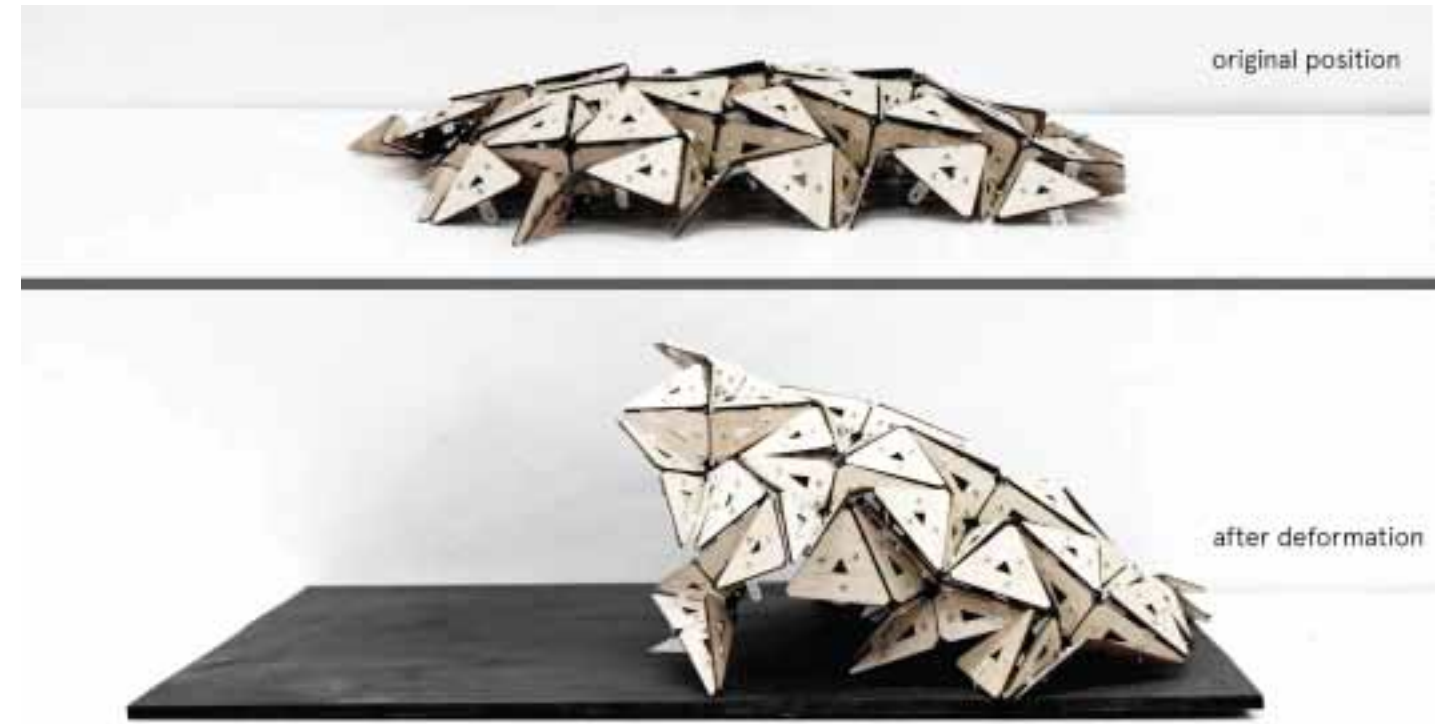
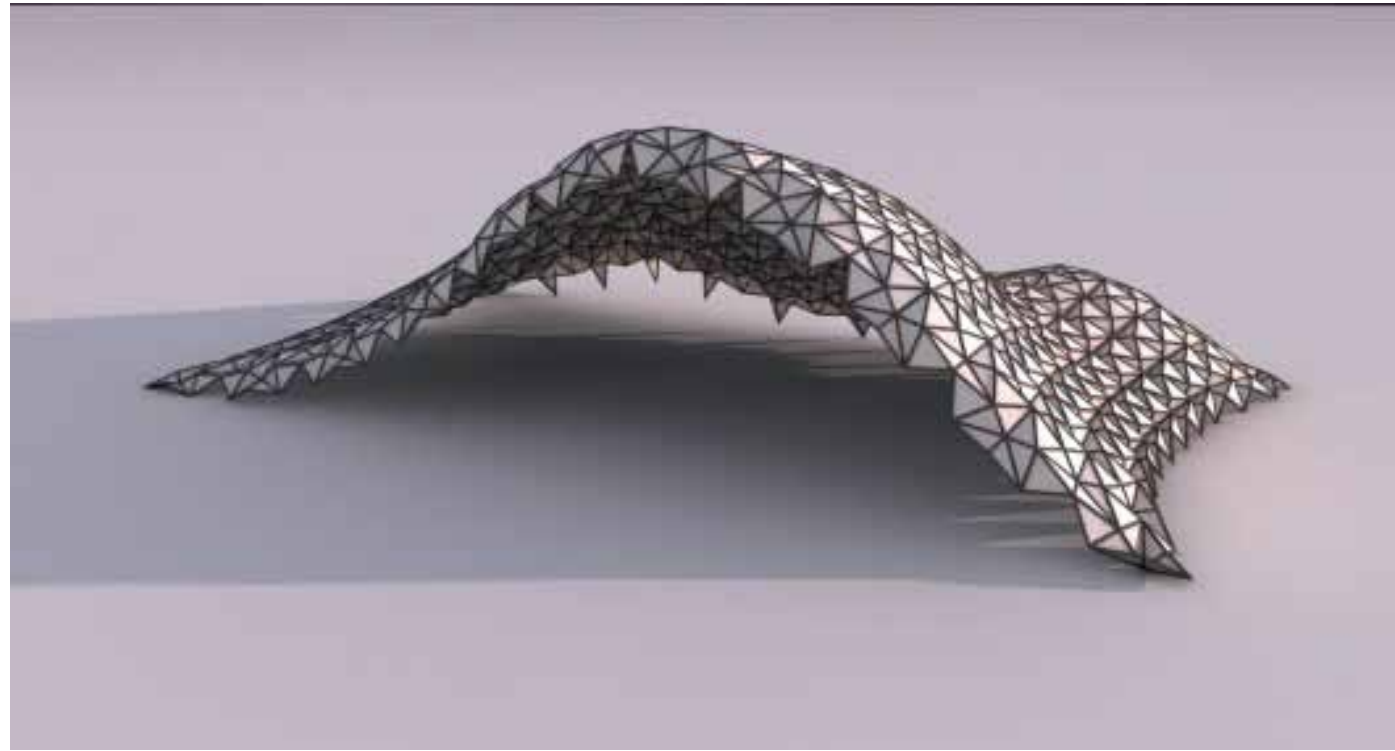
Shading device

Deployable architecture

THERMOCHROMIC INK



SHAPE MEMORY ALLOYS/POLYMERS



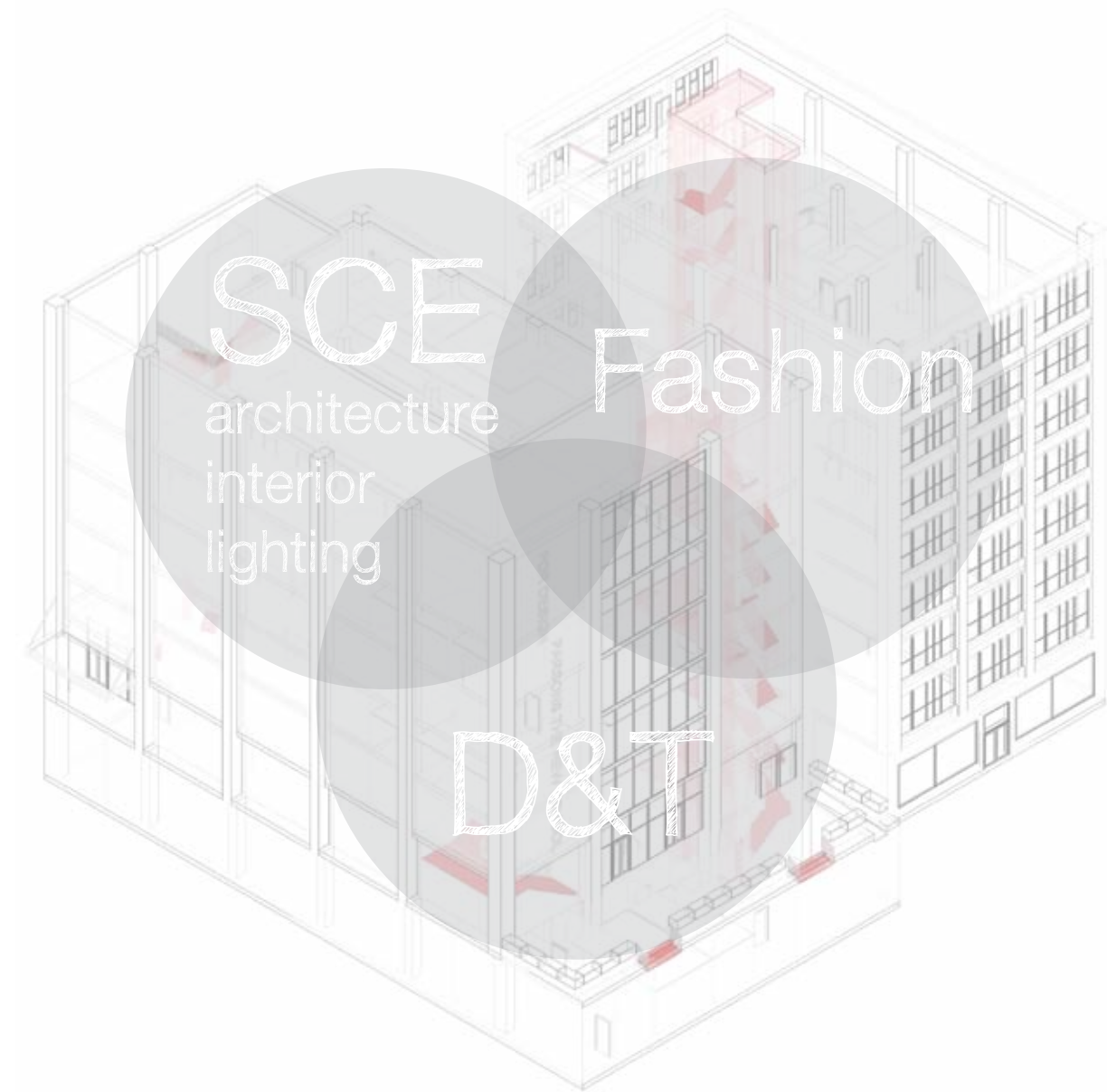
TEXTILES IN .AS. IN ARCHITECTURE

Traditional building systems and material use is compositional and based in systems of disconnected layers. Often the techniques of textile production are used only as a metaphor.

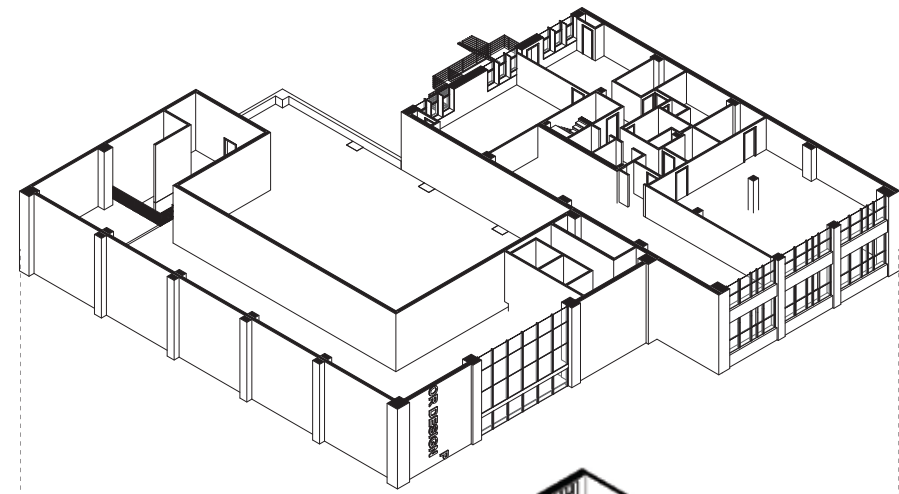
This thesis suggests that there is a possibility to create systems and use materials in a cohesive way using traditional textile production leading to a more specific, responsive, and higher performing building.



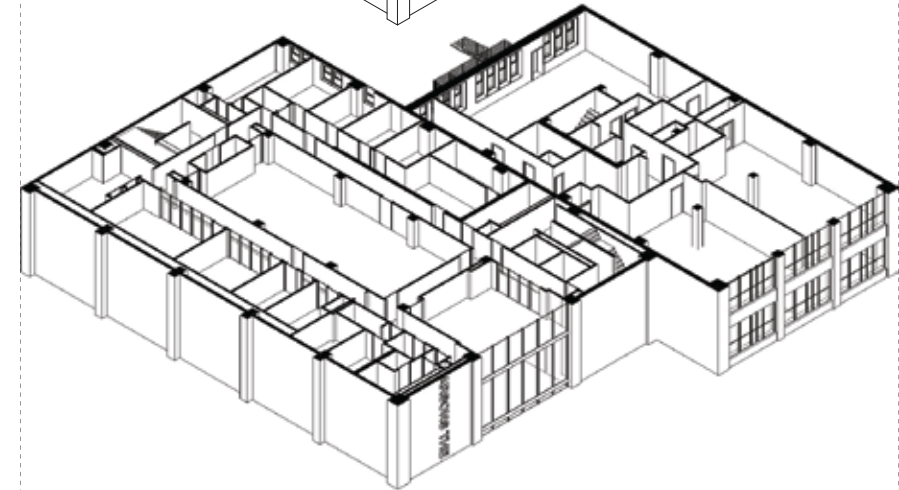
TEXTILE CAMPUS



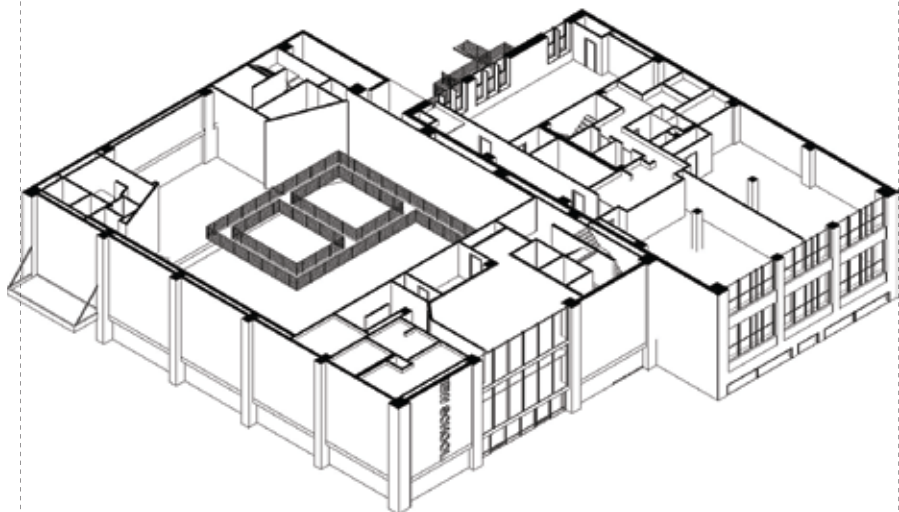
research → retail



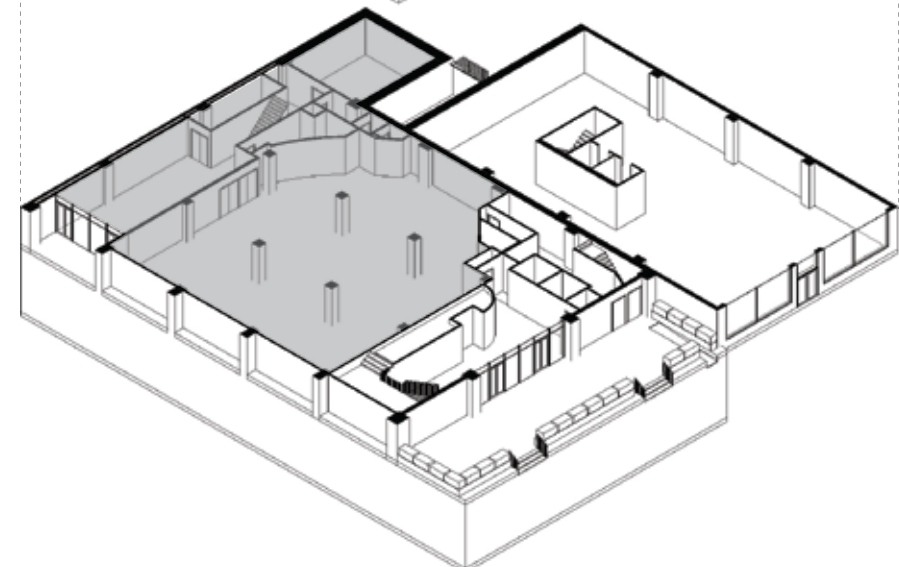
Lab



Classroom



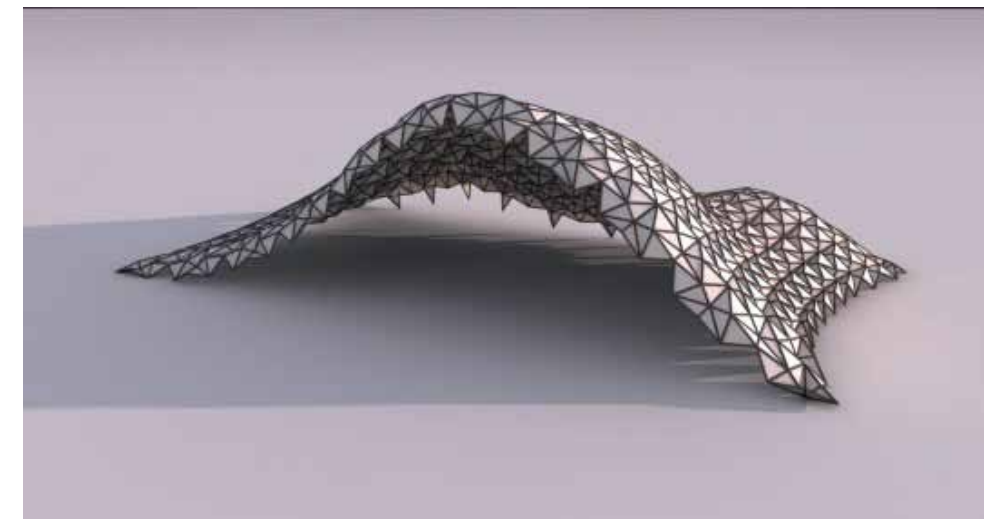
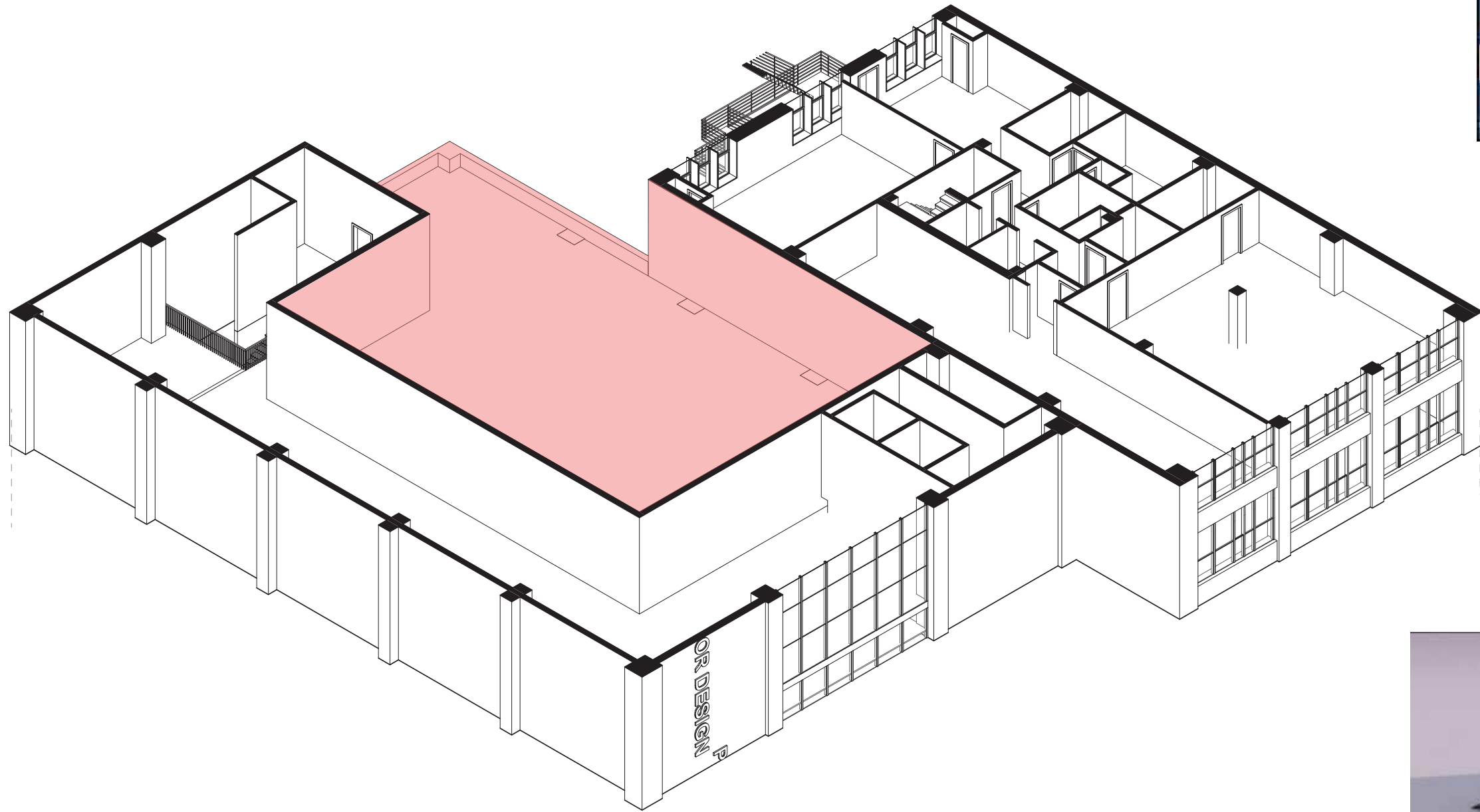
Manufacturing



Gallery



Store



“What we should bear in mind here is the specific quality of textiles in regards to flexibility, pliability, and their high degree of performance relative to their weight, before taking up the part they play aesthetically”

Anni Albers

The Pliable Plane; Textiles in Architecture